

50% FOR VIEWING

Header Card Template

- Front and back are fully customizable.
- Full color range and full bleed is possible.
- The whole header card can have a background color, not just the front.
- We have white and kraft paper options. Note: ink on kraft paper can look darker or not as noticeable, particularly lighter colors.
- We cannot print white ink on to kraft paper. That requires a special printer and ink :) Our printers work with a CMYK printer.
- The text information on our template can be moved around to wherever you see fit. The only elements that *must* be included on the header card are the fiber contents, washing instructions (the symbols) and the "Made in the USA". We legally have to include these!
- The red line at the bottom of the header card indicates where we tack the header card onto the sock. Avoid text in this area as the tack may interfere with it.
- When sending us your header card artwork, please make sure **all** logos are high resolution or vector files. If there are images, please make sure **all** images are embedded or linked in the **Illustrator file** or **PDF**. Lastly, outline **all** the text or provide the font files with the artwork!

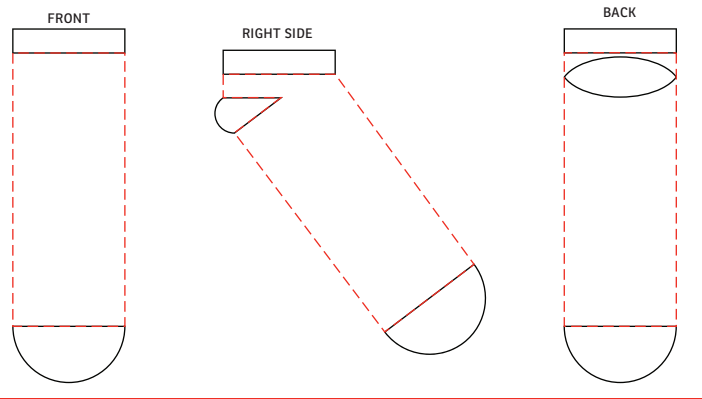
BACK

BLEED
ITEM SIZE

FRONT

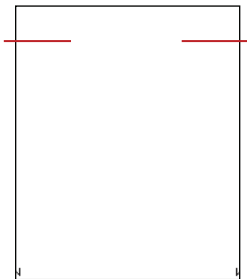
THINGS TO KEEP IN MIND:

- No text or pattern on the cuff, toe or heel
- We recommend 6 or fewer colors
- Intricate designs require even fewer colors
- We cannot PMS color match, but we have 50+ hand-dyed yarn colors that are available for your selection
- Please note: Our design team will review the template and create final proofs for you



Red line indicates the heel break. Any design in this area may be split.
Our design team will review the template and create final proofs for you

FLAT



Item #	Description
WSC-SK26	Custom Ankle Socks
Your artwork will be sized to max imprint area unless otherwise requested. Due to the orientation of some logos, your artwork may be sized smaller than the imprint area listed here or in the catalog to achieve a uniform, non-distorted imprint.	