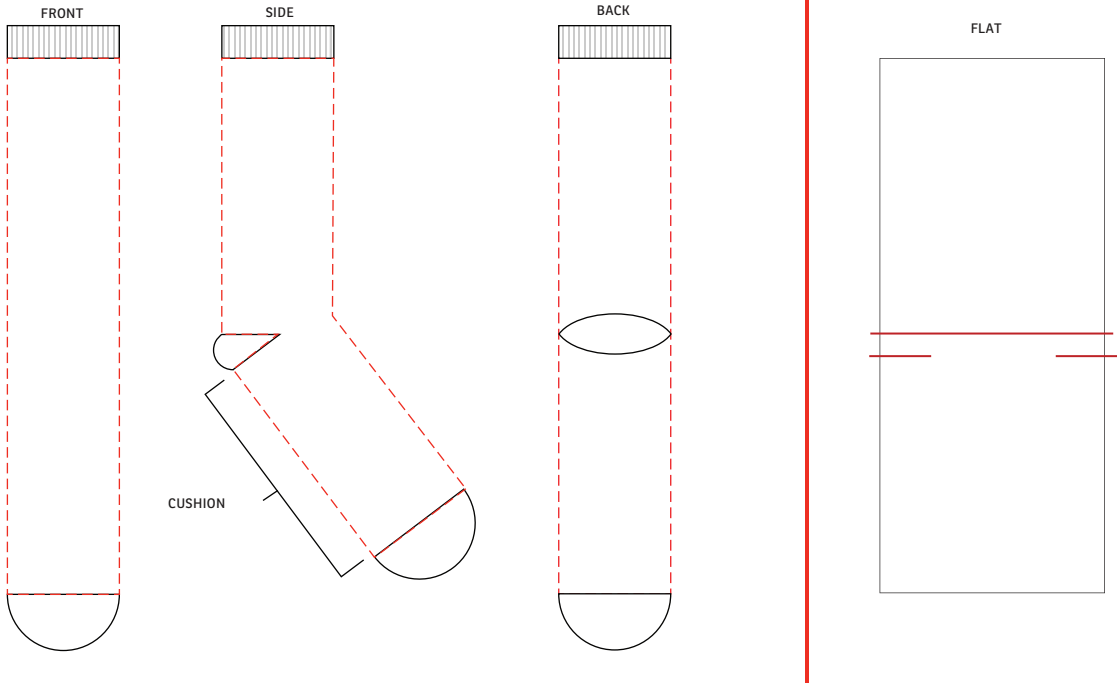


50% FOR VIEWING

THINGS TO KEEP IN MIND:

- No text or pattern on the cuff, toe or heel
- We recommend 5 or fewer colors
- Intricate designs require even fewer colors
- Simple logos/designs work best in the ribbing and cushion area
- We cannot PMS color match, but we have 50+ hand-dyed yarn colors available for your selection
- Please note: Our design team will review the template and create final proofs for you



Red line indicates the heel break. Any design in this area may be split.

Our design team will review the template and create final proofs for you

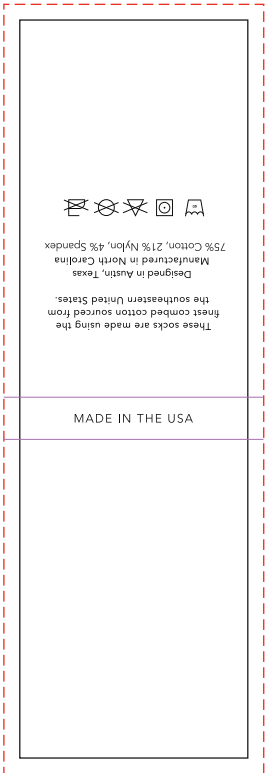
Header Card Template

- Front and back are **fully** customizable.
- **Full** color range and **full** bleed is possible.
- The whole header card can have a background color, not just the front.
- We have white and kraft paper options. Note: ink on kraft paper can look darker or not as noticeable, particularly lighter colors.
- We cannot print white ink on to kraft paper. That requires a special printer and ink :) Our printers work with a CMYK printer.
- The text information on our template can be moved around to wherever you see fit. The **only** elements that **must** be included on the header card are the fiber contents, washing instructions (the symbols) and the "Made in the USA". We **legally** have to include these!
- The red line at the bottom of the header card indicates where we tack the header card onto the sock. Avoid text in this area as the tack may interfere with it.
- When sending us your header card artwork, please make sure **all** logos are high resolution or vector files. If there are images, please make sure **all** images are embedded or linked in the **Illustrator** file or PDF. Lastly, outline **all** the text or provide the font files with the artwork!

BACK

--- BLEED
— ITEM SIZE

FRONT



Item #	Description
WSC-SA26	Custom Athletic Socks
Your artwork will be sized to max imprint area unless otherwise requested. Due to the orientation of some logos, your artwork may be sized smaller than the imprint area listed here or in the catalog to achieve a uniform, non-distorted imprint.	